

National Shoe
www.nationalshoe.com



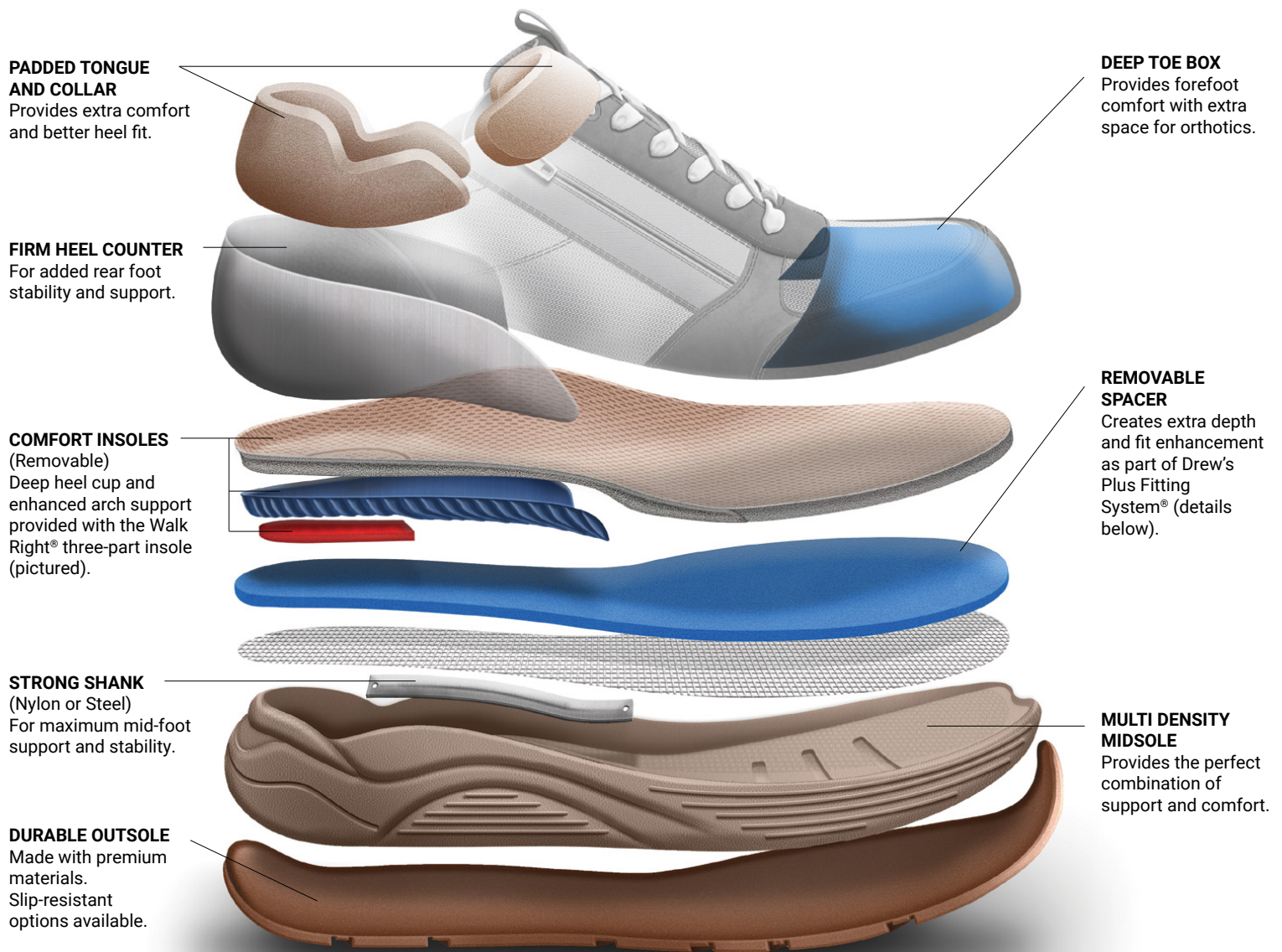
2026 SPRING & SUMMER
PRINTEMPS ET ÉTÉ

DREW
Est. 1875





THE DREW DIFFERENCE - BENEFICIAL FEATURES FOUND IN DREW FOOTWEAR



* Not all Drew styles include Walk Right Technology™, see the Quick Last Reference Pages 19 & 20 for individual specifics.

The Drew Shoe Plus Fitting System®

An innovative design offering extra depth and customizable space in Drew shoes with two removable insoles to accommodate prescribed orthotics or to just provide a more generous fit. Drew's mission is to promote a healthier lifestyle from the feet up.

Key Features

- **Two Removable Footbeds:** Includes a primary insole and a second EVA spacer.
- **Customizable Fit:** This optional EVA spacer allows for more toe room.
- **Versatility:** Drew's Plus Fitting System® addresses and alleviates lower body health conditions and various foot ailments by accommodating off the shelf and custom orthotics.

Style specific features can be found on our Quick Last Reference charts on pages 19 & 20.



- Ergonomic cork and latex footbed cradles the heel and balls of the feet
- Enhanced arch support helps distribute pressure
- Soft leather lined footbed keeps feet dry and comfortable
- Lightweight polyurethane sole for added cushioning
- Each style includes adjustability features for a customized fit

Maeve features a stretch heel and vamp strap, creating a customized, comfortable fit.

MELANIE • 10866



Black Stretch (10)

MELANIE SIZES: M (B) 6-10, 11, 12; W (D) 6-10, 11, 12; WW (EE) 6-10, 11, 12



MAEVE
Navy Combo

MARGO • 10864



Metallic Combo (80)

Black Combo (10)

Floral Multi Combo (95)

MAEVE • 10853



Natural/Metallic Combo (80)

Blue Combo (40)

Navy Combo (45)

Black Combo (10)

Natural/White Combo (20)

MARGO AND MAEVE SIZES: N (AA) 7-10, 11, 12; M (B) 6-10, 11, 12; W (D) 6-10, 11, 12; WW (EE) 6-10, 11, 12



P246



- Hands free design for touchless, effortless on and off
- Nylon shank provides structural support under the arch
- Moisture wicking linings keep feet dry
- High rebound EVA midsole for shock absorption
- Firm, extended medial heel stabilizer helps stabilize the foot, improving overall balance

HALO II • 13190



NEW Colour!
Blue Ombre Mesh Combo (40)



Black Mesh Combo (19)

BOBBIE • 10837



NEW Colour!
White Mesh Combo (21)



Taupe Suede Combo (77)

BANDIT • 10863



Black/Tan Leopard
Combo (12)



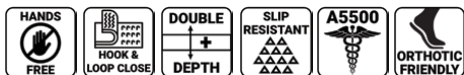
Black Mesh Combo (19)



Sand Mesh Combo (72)

HALO II, BOBBIE AND BANDIT SIZES: M (B) 6-11, 12; W (D) 6-11, 12; WW (EE) 6-11, 12; XW (4E) 6-11, 12

BITSY • 10851



Black Combo (10)



Cream Combo (30)



BITSY
Cream Combo

BITSY SIZES: M (B) 6-11, 12; W (D) 6-11, 12; WW (EE) 6-11, 12; XW (4E) 6-11, 12

**Drew's No Hands No Hassle™
No Bending. No Touching.
No Tying. NO KIDDING!**



- P244**
- Nylon shank provides structural support under the arch
 - Moisture wicking linings keep feet dry
 - High rebound EVA midsole for shock absorption
 - Rocker bottom improves gait efficiency, eases pressure and reduces joint stress
 - Firm, extended medial heel stabilizer helps stabilize the foot, improving overall balance

BALANCE • 10835



Grey Mesh Combo (43)



Blue Mesh Combo (8K)



Black Mesh Combo (19)

BALANCE SIZES: M (B) 6-11, 12; W (D) 6-11, 12; WW (EE) 6-11, 12; XW (4E) 6-11, 12



P246



- Nylon shank provides structural support under the arch
- Moisture wicking linings keep feet dry
- High rebound EVA midsole for shock absorption
- Rocker bottom improves gait efficiency, eases pressure and reduces joint stress
- Firm, extended medial heel stabilizer helps stabilize the foot, improving overall balance

JAZZ • 10842



Camel Suede (82)



Black/Pink
Suede Combo (19)

Removable Strap

JULEP • 10840



Dual gored vamp for better fit and comfort.



Black Combo (19)



Cream Combo (77)



Denim Combo (37)

JAVA • 10841



Tan Nubuck Leather (82)



Multi Colour Raffia/
Leather Combo (96)



Black Nubuck Leather (19)

JAZZ, JULEP AND JAVA SIZES: N (AA) 6-11, 12; M (B) 6-11, 12; W (D) 6-11, 12; WW (EE) 6-11, 12; XW (4E) 6-11, 12

JANICE • 10868



Stretch uppers and binding won't pinch foot.

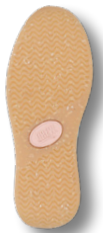
Removable instep cushion.



Navy Combo (45)

Sand Combo (30)

Black Combo (10)



P251



- Nylon shank provides structural support under the arch
- Moisture wicking linings keep feet dry
- High rebound EVA midsole for shock absorption
- Rocker bottom improves gait efficiency, eases pressure and reduces joint stress
- Firm, extended medial heel stabilizer helps stabilize the foot, improving overall balance

HAPPY • 10839



NEW Colour!
White Mesh Combo (21)



Solid Black Combo (12)

Leopard/Olive Combo (77)



Lace it and leave it!
Functional zippers
make Happy
easy on and off!



Grey Suede Combo (43)

Multicolour Suede Combo (96)

HOBBY • 10838



Navy Suede Combo (42)



Black Suede Combo (19)



Taupe Suede Combo (77)

JANICE, HAPPY AND HOBBY SIZES: M (B) 6-11, 12; W (D) 6-11, 12; WW (EE) 6-11, 12; XW (4E) 6-11, 12



P221



- Tempered steel shank provides structural support under the arch
- Moisture wicking linings keep feet dry
- Stretch fabric linings adapt to sensitive or swollen feet providing greater comfort
- Ultra-lightweight and dual-density slip-resistant rubber outsole provides excellent traction
- Firm, extended medial heel stabilizer helps stabilize the foot, improving overall balance

MAGNOLIA • 14326



Black Leather/Stretch (99)

MAGNOLIA SIZES: N (AA) 6-12; M (B) 5-13; W (D) 5-13; WW (EE) 5-13

TULIP • 10202



Black Croc Patent Leather (1P)

TULIP SIZES: S (4A) 6-12; N (AA) 6-12; M (B) 5-13; W (D) 5-13; WW (EE) 5-13



Black Leather (12)

ROSE • 14375



Brown Croc Patent Leather (6P) - *this colour not available in Slim width*

ROSE SIZES: S (4A) 6-12; N (AA) 6-12; M (B) 5-13; W (D) 5-13; WW (EE) 5-13



Black Leather (99)



Black Croc Patent Leather (1P)

BUTTERCUP • 14802



Removable instep cushion.



Grey Stretch Combo (43)



Navy Stretch Combo (42)



Black Stretch Combo (99)



Sand Stretch Combo (30)

**Not available in N width or sizes 5 and 5.5*



Trimmable strap extender

BUTTERCUP SIZES: N (AA) 6-12; M (B) 5-12, 13; W (D) 5-12, 13; WW (EE) 5-12, 13



BLAZER • 10418

Black Leather (12)

N (AA) 7-12; M (B) 6-12; W (D) 6-12; WW (EE) 6-12; XW (4E) 6-11



PAIGE • 14695

Black Leather (12)



N (AA) 7-13; M (B) 5-13; W (D) 5-13; WW (EE) 5-13; XW (4E) 5-13



BLOOM II • 14353

Black Leather (12)
Black Leather/Stretch (99)



N (AA) 6-12; M (B) 5-12; W (D) 5-12; WW (EE) 5-12



PARADE II • 10295

Black Leather (12)

N (AA) 6-12; M (B) 5-12; W (D) 5-12; WW (EE) 5-12



FIESTA • 10175

Black Leather (12)
added depth only

N (AA) 6-12; M (B) 5-12; W (D) 5-12; WW (EE) 5-12; XW (4E) 5-11



PARADISE II • 14521

Black Leather (12)



N (AA) 6-12; M (B) 5-12; W (D) 5-12; WW (EE) 5-12



FLARE • 10285

White/Blue Leather Combo (04)

N (AA) 7-12; M (B) 5-13; W (D) 5-13; WW (EE) 5-13; XW (4E) 5-13



PHOENIX PLUS • 10217

Black Leather (12)

S (4A) 7-12; N (AA) 7-12; M (B) 5-12; W (D) 6-12; WW (EE) 6-12



FUSION • 10545

Black Leather (12)

N (AA) 7-12; M (B) 5-13; W (D) 5-13; WW (EE) 5-13; XW (4E) 5-13



SEDONA • 10125

Black Leather (12)
added depth only

N (AA) 6-12; M (B) 5-12; W (D) 5-12; WW (EE) 5-12; XW (4E) 5-11



LOTUS • 14631

Black Leather (12)



N (AA) 6-12; M (B) 5-13; W (D) 5-13; WW (EE) 5-13



ZIP II • 10821

Black Tumbled Nappa (18)

N (AA) 6-12; M (B) 5-12; W (D) 5-12; WW (EE) 5-12



NEW VILLAGER • 10676

Black Pebbled Leather (11)

N (AA) 7-12; M (B) 5-12; W (D) 6-12; WW (EE) 6-12; XW (4E) 6-10



ANTWERP • 14331

Black Leather - Stretch (99)

N (AA) 6-12; M (B) 5-12; W (D) 5-12; WW (EE) 5-12; XW (4E) 5-12



P438



- Hands free design for touchless, effortless on and off
- Nylon shank provides structural support under the arch
- Moisture wicking linings keep feet dry
- High rebound EVA midsole for shock absorption
- Firm, extended medial heel stabilizer helps stabilize the foot, improving overall balance

ECHO • 43002



Black Mesh Combo (19)



Dark Navy Mesh Combo (4V)

EXPLORE II • 43004



NEW Colour!
Grey/White Mesh Combo (90)



NEW Colour!
Sage Mesh Combo (35)



Black Mesh Combo (19)



P431



- Hands free design for touchless, effortless on and off
- Nylon shank provides structural support under the arch
- Moisture wicking linings keep feet dry
- Firm, extended medial heel stabilizer helps stabilize the foot, improving overall balance

CALEB • 40117

Caleb is crafted with soft man-made materials.



Camel Combo (82)



Black Combo (19)

ECHO, EXPLORE II AND CALEB SIZES:

M (D) 8-12, 13, 14, 15, 16; **W (EE)** 8-12, 13, 14, 15, 16; **4W (4E)** 8-12, 13, 14, 15, 16; **(6E)** 8-12, 13, 14, 15, 16



P431



- Hands free design for touchless, effortless on and off
- Nylon shank provides structural support under the arch
- Moisture wicking linings keep feet dry
- Firm, extended medial heel stabilizer helps stabilize the foot, improving overall balance

CHANNING • 40126



Olive Combo (35)



Tan Combo (70)



CHANNING SIZES:

M (D) 8-12, 13, 14, 15, 16; W (EE) 8-12, 13, 14, 15, 16; 4W (4E) 8-12, 13, 14, 15, 16; (6E) 8-12, 13, 14, 15, 16

CONNOR • 40113



White Suede Combo (21)

Quick release adjustable stretch laces



Black Suede Combo (19)



Grey Suede Combo (43)



Navy Suede Combo (42)



CONNOR Grey Suede Combo

Drew's No Hands No Hassle™
No Bending. No Touching.
No Tying. NO KIDDING!

CONNOR SIZES:

N (B) 9-12, 13, 14; M (D) 8-12, 13, 14, 15, 16; W (EE) 8-12, 13, 14, 15, 16; 4W (4E) 8-12, 13, 14, 15, 16; (6E) 8-12, 13, 14, 15, 16



P439



- Nylon shank provides structural support under the arch
- Moisture wicking linings keep feet dry
- High rebound EVA midsole for shock absorption
- Rocker bottom improves gait efficiency, eases pressure and reduces joint stress
- Firm, extended medial heel stabilizer helps stabilize the foot, improving overall balance

CONTEST • 44010



Black Mesh Combo (19)

PLAYER • 40105



Grey Mesh Combo (43)



Black Mesh Combo (19)



Navy/Orange Mesh Combo (41)

CONTEST AND PLAYER SIZES:

M (D) 8-12, 13, 14, 15, 16; **W (EE)** 8-12, 13, 14, 15, 16; **4W (4E)** 8-12, 13, 14, 15, 16; **(6E)** 8-12, 13, 14, 15, 16



P74



- Wide, synthetic nylon shank provides structural support under the arch
- Moisture wicking linings keep feet dry
- High rebound EVA midsole for shock absorption
- Rocker bottom improves gait efficiency, eases pressure and reduces joint stress
- Firm, medial heel stabilizer helps stabilize the foot, improving overall balance

AARON • 40893



Navy Suede/Mesh (4V)

Grey Suede/Mesh (43)

Black Leather/
Nylon/Mesh (19)

Brown Nylon/
Mesh (68)



AARON SIZES:

N (B) 9-13, 14; **M (D)** 7-13, 14, 15; **W (EE)** 7-13, 14, 15; **4W (4E)** 7-13, 14, 15; **(6E)** 7-13, 14, 15



P446

- Nylon shank provides structural support under the arch
- Moisture wicking linings keep feet dry
- Rubber outsole and EVA midsole provides excellent traction and shock absorption
- Firm, extended medial heel stabilizer helps stabilize the foot, improving overall balance



NASH • 40127

Grey Mesh Combo (90)

Navy Mesh Combo (45)



Black Mesh Combo (10)

NASH SIZES:

M (D) 8-12, 13, 14, 15, 16; **W (EE)** 8-12, 13, 14, 15, 16; **4W (4E)** 8-12, 13, 14, 15, 16; **(6E)** 8-12, 13, 14, 15, 16



P741

AVAILABLE IN UP TO 8E WIDTHS

- Dual shank system - wide, synthetic fiber and external TPU for superior stability and improved arch support
- Moisture wicking linings keep feet dry
- Rubber outsole and EVA midsole provides excellent traction and shock absorption
- Rocker bottom improves gait efficiency, eases pressure and reduces joint stress
- Firm medial heel stabilizer helps stabilize the foot, improving overall balance



LEDGER • 40129



Black Combo (10)

LANCE • 40128

Grey Mesh Combo (90)

Black Mesh Combo (10)



White Mesh Combo (20)

LEDGER AND LANCE SIZES:

M (D) 8-12, 13, 14, 15, 16; **W (EE)** 8-12, 13, 14, 15, 16; **4W (4E)** 8-12, 13, 14, 15, 16; **(6E)** 8-12, 13, 14, 15, 16; **(8E)** 8-12, 13, 14



P441



AVAILABLE IN UP TO 8E WIDTHS (excludes Miller Tan Combo)

- Nylon shank provides structural support under the arch
- Moisture wicking linings keep feet dry
- Rubber outsole provides excellent traction and shock absorption
- Rocker bottom improves gait efficiency, eases pressure and reduces joint stress
- Firm, extended medial heel stabilizer helps stabilize the foot, improving overall balance

MARVEL • 40112



NEW Colour
All Over Black
Mesh Combo (10)



Brown Mesh Combo (68)

MAKER • 40111



Black Pebbled Leather (14)



Brown Pebbled
Leather (64)



MATCH • 43001

Brown Pebbled Leather (64)



Black Pebbled
Leather (19)



MILLER • 40115



NEW Colour
Blue/White Suede Combo (40)



Lace it and leave it!
Functional zippers make Miller
easy on and off!



NEW Colour
Grey Suede Combo (43)



Black Suede Combo (19)*

Tan Suede Combo (82)

MARVEL, MAKER, MATCH AND MILLER SIZES:

M (D) 8-12, 13, 14, 15, 16; **W (EE)** 8-12, 13, 14, 15, 16; **4W (4E)** 8-12, 13, 14, 15, 16; **(6E)** 8-12, 13, 14, 15, 16; **(8E)** 8-12, 13, 14 (*8E Black Only)



PI27



- Soft toe
- Waterproof leather to block external moisture from entering the shoe
- Slip-resistant, Electrical Hazard Certified outsole for safe footing (**Certified only in the USA**)
- Composite shank provides structural support under the arch
- Long wearing polyurethane wedge outsole

BUFFALO • 40124



Buffalo, Burbank and Boston each have a medial zipper (arch side) for easy on and off.

Rust Leather (60)

BURBANK • 40125



Chocolate Leather (68)



Black Leather (10)

BOSTON • 40123



Olive Grey Leather (90)



Rust Leather (60)

BUFFALO, BURBANK AND BOSTON SIZES:



P495



- Waterproof leather and lining to block external moisture from entering the shoe
- Tempered steel shank provides structural support under the arch
- Moisture wicking linings keep feet dry
- Rocker bottom improves gait efficiency, eases pressure and reduces joint stress
- Firm, medial heel stabilizer helps stabilize the foot, improving overall balance
- Slip-resistant, oil-resistant, non-marking outsole for safe footing

CANYON • 40737



Black Leather (14)



Brown Leather (68)

CANYON SIZES: M (D) 8-13, 14, 15,16; **W (EE)** 8-13, 14, 15, 16; **4W (4E)** 7-13, 14, 15, 16; **(6E)** 7-13, 14, 15, 16

TREK • 40697



Dark Brown Leather (68)

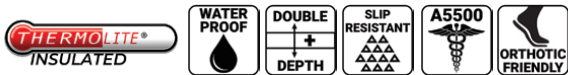


Black Nubuck Leather (15)

TREK SIZES: N (B) 9-13; **M (D)** 8-13, 14, 15, 16; **W (EE)** 8-13, 14, 15, 16; **4W (4E)** 7-13, 14, 15, 16; **(6E)** 7-13, 14, 15, 16



P420



- 200 gm Thermolite® insulated and waterproof lining keeps feet warm and dry in wet and cold conditions
- Tempered steel shank provides structural support under the arch
- Moisture wicking linings keep feet dry
- Rocker bottom improves gait efficiency, eases pressure and reduces joint stress
- Firm, medial heel stabilizer helps stabilize the foot, improving overall balance
- Slip-resistant, oil-resistant, non-marking outsole for safe footing

ROCKFORD • 40808



Wheat Nubuck (9R)



Camo Suede Leather (40)



Brown Leather (68)



Black Leather (18)

ROCKFORD SIZES:

M (D) 8-13, 14, 15, 16; **W (EE)** 8-13, 14, 15, 16; **4W (4E)** 8-13, 14, 15, 16; **(6E)** 8-13, 14, 15, 16



BIG EASY • 44859

Brown Pebbled Leather (68)
Black Pebbled Leather (14)



N (B) 9-14; M (D) 8-16; W (EE) 8-16; 4W (4E) 7-16; (6E) 7-16



NAVIGATOR II • 44837

Black Pebbled Leather (14)



N (B) 8.5-14; M (D) 8-16; W (EE) 7-16; 4W (4E) 7-16; (6E) 7-16



FORCE • 40960

White Leather (22)
Black Leather (14)

N (B) 9-14; M (D) 7-16; W (EE) 7-16; 4W (4E) 7-16; (6E) 7-16



PARK • 40991

Brown Leather (68)
Black Leather (14)
added depth only

N (B) 9-13; M (D) 8-16; W (EE) 8-16; 4W (4E) 7-16; (6E) 7-16



FORCE V • 44714

White Leather (22)
Black Leather (14)



N (B) 9-14; M (D) 7-16; W (EE) 7-16; 4W (4E) 7-16; (6E) 7-16



PULSE • 40794

Black Leather (14)



M (D) 7-16; W (EE) 7-16; 4W (4E) 7-16; (6E) 7-16



JIMMY • 44935

Black Leather (14)



N (B) 9-14; M (D) 7-16; W (EE) 7-16; 4W (4E) 7-16; (6E) 7-16



SURGE • 40760

Grey Leather/Mesh (43)
Black Leather (14)

N (B) 9-14; M (D) 7-16; W (EE) 7-16; 4W (4E) 7-16; (6E) 7-16



JOURNEY II • 44885

Black Leather/Stretch (99)



M (D) 8-16; W (EE) 7-16; 4W (4E) 7-16; (6E) 7-16



TRAVELER V • 44908

Black Pebbled Leather (14)



M (D) 8-15; W (EE) 8-15; 4W (4E) 7-14; (6E) 7-13



LIGHTNING II • 40805

White Leather/Mesh (21)
Black Leather/Mesh (19)

N (B) 9-14; M (D) 7-16; W (EE) 7-16; 4W (4E) 7-16; (6E) 7-16



TUCSON • 40678

Black Pebbled Leather (14)

N (B) 9-14; M (D) 8-16; W (EE) 8-16; 4W (4E) 7-16; (6E) 7-16



LIGHTNING II V • 44735

Black Leather/Mesh (19)
White Leather/Mesh (21)



N (B) 9-14; M (D) 7-16; W (EE) 7-16; 4W (4E) 7-16; (6E) 7-16



WALKER II • 40784

Black Pebbled Leather (14)

N (B) 9-14; M (D) 8-16; W (EE) 7-16; 4W (4E) 8-16; (6E) 8-16



DOUBLER • 40822

Black Pebbled Leather (11)



N (B) 9-14; M (D) 7-16; W (EE) 7-15; 4W (4E) 8-14



TRAVELER • 40973

Black Pebbled Leather (14)

N (B) 9-13; M (D) 8-15; W (EE) 8-15; 4W (4E) 7-14; (6E) 7-13



P16 • pg. 9 *Zip II, Bloom II, Parade II, Paradise II*

- HCPCS Code A5500
- Plus Fitting System® - two removable footbeds for added and double depth
- Soft, foam padded tongue and collar
- Removable, moldable dual-density insert
- Dri-Lex® linings for moisture wicking
- Tempered steel shank
- Lightweight, flared polyurethane outsole
- Full contact outsole
- Firm medial heel stabilizer
- Accommodates prescribed orthotics



P46 • pg. 9 *New Villager, Phoenix Plus, Blazer*

- HCPCS Code A5500
- Plus Fitting System® - two removable footbeds for added and double depth
- Soft, foam padded tongue and collar
- Removable, moldable dual-density insert
- Dri-Lex® linings for moisture wicking (*Phoenix Plus and Blazer*)
- Seamless, deerskin lining (*New Villager*)
- Tempered steel shank
- Lightweight, flared polyurethane outsole with rocker bottom
- Firm extended medial heel stabilizer
- Accommodates prescribed orthotics



P88 • pg. 9 *Fiesta, Sedona*

- HCPCS Code A5500
- Added depth
- Soft, foam padded tongue and collar
- Removable, moldable dual-density insert
- Dri-Lex® linings for moisture wicking
- Tempered steel shank
- Flexible, lightweight polyurethane outsole with rocker bottom
- Firm extended medial heel stabilizer
- Accommodates prescribed orthotics



P101 • pg. 9 *Flare*

- HCPCS Code A5500
- Plus Fitting System® - two removable footbeds for added and double depth
- Soft, foam padded tongue and collar
- Tri-support insole with built-in heel cushion pad
- Dri-Lex® linings for moisture wicking
- Tempered steel shank
- Durable rubber outsole and EVA midsole with rocker bottom
- Firm extended medial heel stabilizer
- Accommodates prescribed orthotics



P221 • pg. 8 *Magnolia, Tulip, Rose, Buttercup, Lotus (pg. 9)*

- HCPCS Code A5500
- Plus Fitting System® - two removable footbeds for added and double depth
- Removable, moldable dual-density insert with Dri-Lex® topcover
- Stretch fabric linings
- Tempered steel shank
- Ultra-lightweight and dual-density slip-resistant outsole
- Firm extended medial heel stabilizer
- Accommodates prescribed orthotics



P244 • pg. 5 (athletic) *Balance*

- HCPCS Code A5500
- Plus Fitting System® - two removable footbeds for added and double depth
- EVA midsole for shock absorption
- Nylon shank
- Dri-Lex® linings for moisture wicking
- Slip-resistant rubber outsole
- Rocker bottom
- Firm extended medial heel stabilizer
- Accommodates prescribed orthotics



P246 • pg. 4 & 5 (athletic) *Halo II, Bobbie, Bandit, Bitsy*

- HCPCS Code A5500 (*Halo II and Bitsy pending*)
- Hands free entry with built-in shoe horn
- Plus Fitting System® - with Walk Right Technology dual insoles for added and double depth
- Dri-Lex® linings for moisture wicking
- Nylon shank
- High rebound EVA midsole for shock absorption
- Slip-resistant rubber outsole
- Firm extended medial heel stabilizer
- Accommodates prescribed orthotics



P246 • pg. 6 & 7 (casuals) *Jazz, Julep, Java, Janice*

- HCPCS Code A5500 (*Julep only, Janice pending*)
- Plus Fitting System® - two removable footbeds for added and double depth
- Dri-Lex® linings for moisture wicking
- Nylon shank
- High rebound EVA midsole for shock absorption
- Slip-resistant rubber outsole with rocker bottom
- Firm extended medial heel stabilizer
- Accommodates prescribed orthotics



P251 • pg. 7 *Hobby, Happy*

- HCPCS Code A5500
- Plus Fitting System® - two removable footbeds for added and double depth
- Dri-Lex® linings for moisture wicking
- Nylon shank
- Lightweight, high-rebound EVA midsole
- Slip-resistant rubber outsole with rocker bottom
- Firm, extended medial heel stabilizer
- Accommodates prescribed orthotics



P801 • pg. 9 *Paige, Fusion*

- HCPCS Code A5500
- Plus Fitting System® - two removable footbeds for added and double depth
- Soft, foam padded tongue and collar
- Dri-Lex® linings for moisture wicking
- Dual shank system - wide, synthetic fiber and external TPU
- Durable rubber outsole and EVA midsole with rocker bottom
- Firm medial heel stabilizer
- Accommodates prescribed orthotics



- PI27** • pg. 15 *Buffalo, Burbank, Boston*
- HCPCS Code A5500 (*pending*)
 - Waterproof
 - Slip-resistant (SR), Electrical Hazard Certified (EH)
 - Removable cushioned insole
 - Composite shank
 - Soft toe
 - Long-wearing P/U wedge outsole
 - Accommodates prescribed orthotics



- P66** • pg. 17 *Navigator II, Tucson, Big Easy, Walker II, Journey II, Traveler V*
- HCPCS Code A5500
 - Plus Fitting System® - two removable footbeds for added and double depth
 - Soft, foam padded tongue and collar
 - Dri-Lex® linings for moisture wicking
 - Removable, moldable dual-density insert
 - Tempered steel shank
 - Lightweight, flared polyurethane outsole with rocker bottom
 - Firm extended medial heel stabilizer
 - Accommodates prescribed orthotics



- P74** • pg. 12 *Aaron*
- HCPCS Code A5500
 - Plus Fitting System® - two removable footbeds for added and double depth
 - Soft, foam padded tongue and collar
 - Dri-Lex® linings for moisture wicking
 - Wide, synthetic fiber shank
 - EVA midsole
 - Lightweight, flared rubber outsole with rocker bottom
 - Firm medial heel stabilizer
 - Accommodates prescribed orthotics



- P401** • pg. 17 *Pulse, Surge, Force, Force V*
- HCPCS Code A5500
 - Plus Fitting System® - two removable footbeds for added and double depth
 - Soft, foam padded tongue and collar
 - Tri-support insole with built-in heel cushion pad
 - Dri-Lex® linings for moisture wicking
 - Wide, tempered steel shank
 - Durable rubber outsole and EVA midsole with rocker bottom
 - Firm extended medial heel stabilizer
 - Accommodates prescribed orthotics



- P420** • pg. 16 *Rockford*
- HCPCS Code A5500
 - Plus Fitting System® - two removable footbeds for added and double depth
 - 200 gm Thermolite® insulated and waterproof lining
 - Tempered steel shank
 - Firm medial heel stabilizer
 - Slip-resistant, oil-resistant, non-marking outsole
 - Rocker bottom
 - Accommodates prescribed orthotics



- P431** • pg. 10 & 11 *Caleb, Channing, Connor*
- HCPCS Code A5500 (*Connor only, Channing pending*)
 - Hands free entry with built-in shoe horn
 - Plus Fitting System® - with Walk Right Technology dual insoles for added and double depth
 - Dri-Lex® linings for moisture wicking
 - Nylon shank
 - Slip-resistant rubber outsole
 - Firm extended medial heel stabilizer
 - Accommodates prescribed orthotics



- P433** • pg. 17 *Park*
- HCPCS Code A5500
 - Added depth
 - Soft, foam padded tongue and collar
 - Removable polyurethane footbed
 - Leather and Dri-Lex® linings for moisture wicking
 - Tempered steel shank with built-in arch
 - Lightweight, polyurethane outsole
 - Firm extended medial heel stabilizer
 - Accommodates prescribed orthotics



- P438** • pg. 10 *Echo, Explore II*
- HCPCS Code A5500 (*Explore II pending*)
 - Hands free entry with built-in shoe horn
 - Plus Fitting System® - with Walk Right Technology dual insoles for added and double depth
 - Dri-Lex® linings for moisture wicking
 - Nylon shank
 - High-rebound EVA midsole for shock absorption
 - Slip-resistant rubber outsole
 - Firm extended medial heel stabilizer
 - Accommodates prescribed orthotics



- P439** • pg. 12 *Contest, Player*
- HCPCS Code A5500
 - Plus Fitting System® - with Walk Right Technology dual insoles for added and double depth
 - Dri-Lex® linings for moisture wicking
 - Nylon shank
 - EVA midsole for shock absorption
 - Slip-resistant rubber outsole with rocker bottom
 - Firm extended medial heel stabilizer
 - Accommodates prescribed orthotics



- P441** • pg. 14 *Marvel, Maker, Match, Miller*
- HCPCS Code A5500 (*excludes Match*)
 - 8E widths (*not all colours, see pg. 14*)
 - Plus Fitting System® - with Walk Right Technology dual insoles for added and double depth
 - Dri-Lex® linings for moisture wicking
 - Nylon shank
 - Rubber outsole with rocker bottom
 - Firm extended medial heel stabilizer
 - Accommodates prescribed orthotics



- P446** • pg. 13 *Nash*
- HCPCS Code A5500 (*pending*)
 - Plus Fitting System® - with Walk Right Technology dual insoles for added and double depth
 - Dri-Lex® linings for moisture wicking
 - Nylon shank
 - Rubber outsole with rocker bottom
 - Firm extended medial heel stabilizer
 - Accommodates prescribed orthotics



- P495** • pg. 16 *Canyon, Trek*
- HCPCS Code A5500
 - Plus Fitting System® - two removable footbeds for added and double depth
 - Waterproof leather and lining
 - Tempered steel shank
 - Firm medial heel stabilizer
 - Slip-resistant, oil-resistant, non-marking outsole with rocker bottom
 - Accommodates prescribed orthotics



- P741** • pg. 13 *Ledger, Lance*
- HCPCS Code A5500 (*pending*)
 - 8E widths
 - Plus Fitting System® - two removable footbeds for added and double depth
 - Soft, foam padded tongue and collar
 - Dri-Lex® linings for moisture wicking
 - Dual shank system - wide, synthetic fiber and external TPU
 - Durable rubber outsole and EVA midsole with rocker bottom
 - Firm medial heel stabilizer
 - Accommodates prescribed orthotics



- P741** • pg. 17 *Jimmy, Lightning II, Lightning II V*
- HCPCS Code A5500
 - Plus Fitting System® - two removable footbeds for added and double depth
 - Soft, foam padded tongue and collar
 - Dri-Lex® linings for moisture wicking
 - Dual shank system - wide, synthetic fiber and external TPU
 - Durable rubber outsole and EVA midsole with rocker bottom
 - Firm medial heel stabilizer
 - Accommodates prescribed orthotics



NEW! Sneaker Collection



STYLISH COMFORT SHOES DESIGNED TO
FIT THE FEET AND LIFESTYLE OF THE
WOMEN WHO DESERVE THEM!




Knit Favourites

Removable Tiny Pillows®
tri-density foam insole with
microsuede linings and
enhanced arch support.



Padded collar provides
comfort and reduced
slippage for a secure fit.



Water and stain resistant
uppers on knit styles identified
with  provide dry feet
with lightweight and flexible
rubber unit bottoms.



Knits with Removable Insoles

* Styles or colours with  are treated to be water and stain resistant.

SCOUT • 75194

Heel height 3/4"

Cream Multi Knit (30)

Black Knit (10)

Blue Multi Knit (40)



**NEW
STYLE!**

Black **N** 6-12; **M** 6-12; **W** 6-12; **WW** 6-12

Other Colours **N** 6-12; **M** 6-12; **W** 6-12

STELLA • 75195

Heel height 3/4"

Blue Multi Knit (45)

Bright Multi Knit (30)

Black Multi Knit (10)

Cream/Leopard Knit (95)



**NEW
STYLE!**

N 6-12; **M** 6-12; **W** 6-12; **WW** 6-12

SUNNIE • 75196

Heel height 3/4"

Taupe Multi Knit (70)

Blue Multi Knit (40)

**NEW
STYLE!**



Black Knit (10)

Coral Knit (55)

White Knit (20)

* Styles or colours with  are treated to be water and stain resistant.

NOELLE • 75182

Heel height 1/2"



N 7-13; **M** 6-13; **W** 6-13; **WW** 6-13

NEVE • 75180

Heel height 1/2"



N 7-13; **M** 6-13; **W** 6-13; **WW** 6-13

Knits with Removable Insoles

NIKI • 75181

Heel height 1/2"

* Styles or colours with  are treated to be water and stain resistant.



Coral Knit/ Flecked Sole (55)

New



Black Knit/Tortoise Sole (10)



Navy Knit/Tortoise Sole (40)

New



Brown Woven Knit/Tortoise Sole (63)



Black Woven Knit/Tortoise Sole (11)



Red Knit/Tortoise Sole (50)

New



Leopard Print Knit/Hot Pink Sole (77)

New Colours **N** 6-13; **M** 6-13; **W** 6-13; **WW** 6-13

Other Colours **N** 7-13; **M** 6-13; **W** 6-13; **WW** 6-13

NAOMI • 75179

Heel height 1/2"



Cream/Taupe Knit/
Tortoise Sole (33)



Navy/Cream Knit/
Tortoise Sole (47)



Black/Taupe Knit/
Tortoise Sole (10)



Green/Mint Knit/
Tortoise Sole (79)



Black Rhinestone Knit/
Black Sole (11)



Leopard Print Knit/
Tortoise Sole (7)

EZRA • 75130

Heel height 1 1/4"

Brown Leather (6Q)



Black Leather (10)



N 6-13; M 6-13; W 6-13; WW 6-13

ELLIS • 75157

Heel height 1 1/4"

Black Leather/
Croco Print (10)



Brown Leather/
Croco Print (6Q)



N 7-13; M 6-13; W 6-13; WW 6-13

ESME • 75129

Heel height 1 1/4"

Black Leather (10)



Brown Leather (6Q)



Black Suede Leather (15)



N 6-13; M 6-13; W 6-13; WW 6-13

Knits with Removable Insoles

* Styles or colours with  are treated to be water and stain resistant.

GWYNETH • 75190

Heel height 3/4"

Leopard Knit/Black Sole (77)

Black Knit/Tortoise Sole (10)



N 7-13; **M** 6-13; **W** 6-13; **WW** 6-13

GINNY • 75186

Heel height 3/4"

Camel Knit/Tan Sole (72)

Navy Knit/Tan Sole (47)

Black Knit/Black Sole (10)



N 7-13; **M** 6-13; **W** 6-13; **WW** 6-13

GREER • 75188

Heel height 3/4"

Brown Multi Knit/Tortoise Sole (63)

Black Knit/Black Sole (10)

Black/Leopard Knit/Tortoise Sole (77)



N 7-13; **M** 6-13; **W** 6-13; **WW** 6-13

GRADY • 75187

Heel height 3/4"

Brown Knit/Tortoise Sole (63)

Leopard Knit/Black Sole (77)

Black Knit/Tortoise Sole (10)



N 7-13; **M** 6-13; **W** 6-13; **WW** 6-13

HESTER • 75139

Heel height 1 1/2"



Black Knit Fabric/
Black Leather (99)

N 7-13; **M** 6-13; **W** 6-13; **WW** 6-13

CALIENTE • 75078

Heel height 2 1/2"



Black Micro Fabric/
Leather Sole (10)

S 7-12; **N** 7-13; **M** 5-13; **W** 6-13; **WW** 6-13



Silver Glitter Leather/
Leather Sole (85)

S 7-12; **N** 7-13; **M** 6-13; **W** 6-13; **WW** 6-13

LIZA • 75117

Heel height 1 3/4"



Gold Snake Print
Leather (87)

N 7-13; **M** 6-13; **W** 6-13; **WW** 6-13



Silver Lizard Print
Leather (85)

N 6-13; **M** 6-13; **W** 6-13; **WW** 6-13



Black Micro Fabric (98)

N 6-13; **M** 6-13; **W** 6-13; **WW** 6-13

LEANDRA • 75082

Heel height 1 3/4"



Black Micro Fabric (10)

N 7-13; **M** 6-13; **W** 6-13; **WW** 6-13



Gold Sparkle
Leather (89)

N 7-13; **M** 6-13; **W** 6-13; **WW** 6-13



Silver Sparkle
Leather (85)

N 7-13; **M** 6-13; **W** 6-13; **WW** 6-13

National Shoe
www.nationalshoe.com

3015 Kennedy Rd, Toronto, ON M1V 1E7 Canada
T: 1.800.387.5246 | 416.292.7181 | F: 1.800.568.6930 | 416.292.9154

**Contact your National Shoe Sales Representative
for more information at 1-800-387-5246**

**Veillez contacter votre représentant de National Shoe
du service à la clientèle au 1-800-387-5246**

OREW[®]
Est. 1875

